

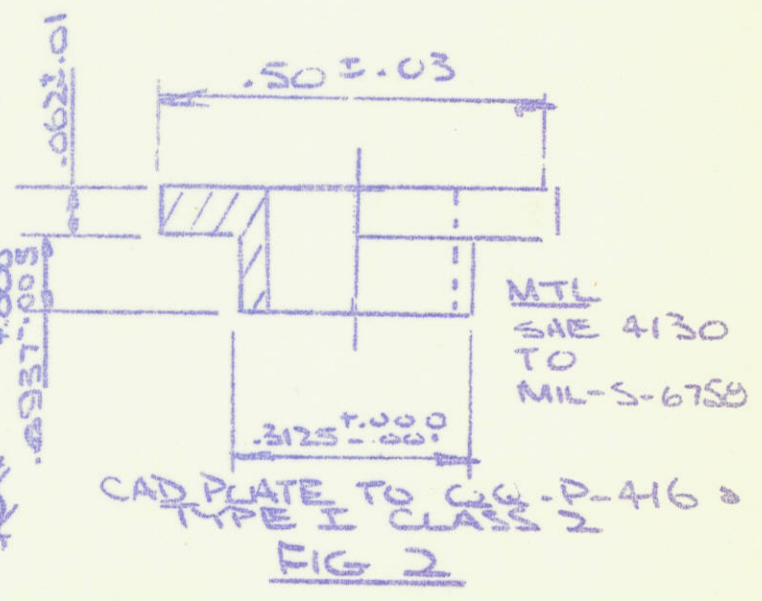
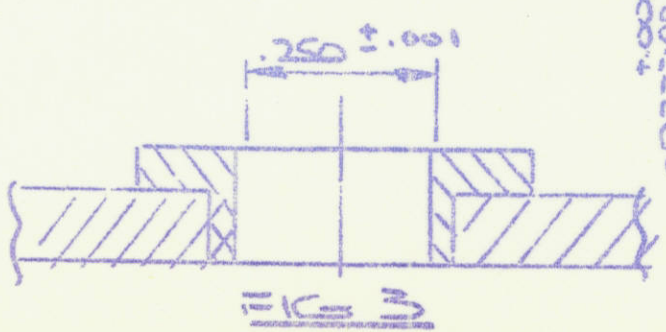
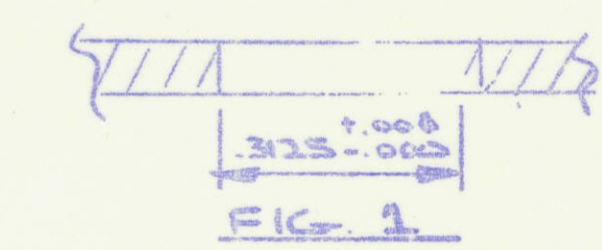
ENGINEERING MEMORANDUM

TITLE REPAIR SCHEME PILOT'S BALANCE CABLE PULLEY BRACKET		E.M. NO. 12326	FILE CODE 111 -41
EFFECTIVE AS REQ'D		DWS. NO.	
JOB NO.		COPIES TO	
CUSTOMER'S ORDER NO.		ENCL.	3
CUSTOMER RCAF		INSPECTION	6
ORIGINATED BY <i>A. W. PROUL</i>		PROG.	5
TYPE AIRCRAFT EXPEDITE		PLANNING	2
AIRCRAFT REGISTRATION NO.		SAT. CONT.	2
DATE 17/1/51		CONC. ADJ.	1
DWS. CHANGE YES <input checked="" type="checkbox"/> NO <input type="checkbox"/>		G.O.A.F.	3
DWS. CONT.		ESTIMATING	1
APPROVALS		DWS. CONT. 4	
ENGINEERING <i>[Signature]</i>		CONTRACTS ADMIN. <i>[Signature]</i>	
		CUSTOMER <i>[Signature]</i>	

GIVE FULL PARTICULARS AND SKETCHES WHERE NECESSARY

ELONGATED HOLES, FOR THE PULLEY SWIFT, IN THE BRACKET WILL BE REPAIRED AS FOLLOWS:

1. REAM EXISTING HOLES AS SHOWN (FIG 1)
2. MANUFACTURE BUSHINGS (FIG 2)
3. INSTALL BUSHINGS WET WITH ZINC CHROMATE PRIMER TO MIL-P-6889
4. REAM 1/4 AS SHOWN IN LINE WITH EXISTING HOLES. (FIG 3)



NOTE: WHEN EFFECTIVITY IS OMITTED FROM E.M. CHANGES ARE TO BE EFFECTIVE UPON PLANNING DEPARTMENT AUTHORIZATION